



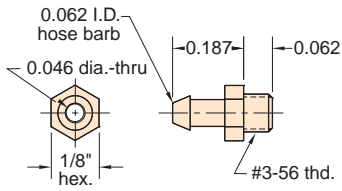
# ADAPTER FITTINGS

**Material:** Brass

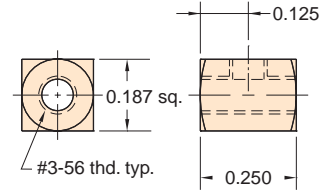
**Thread:** M2.5 - 0.45 (3-56 US equiv.)

**Use:** Threads into Clippard subminiature cylinder; fits 1/16" I.D. hose

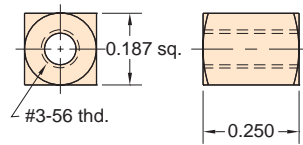
**11750-2**



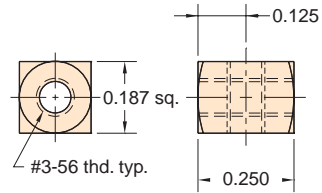
**11749-2**



**11749-1**

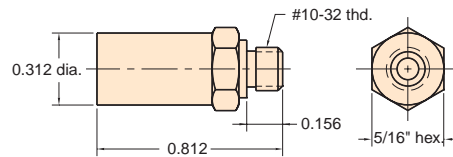


**11749-3**



**15070**

**#10-32 Muffler**



**Material:** Nickel plated brass body sintered stainless steel muffler (60 micron)

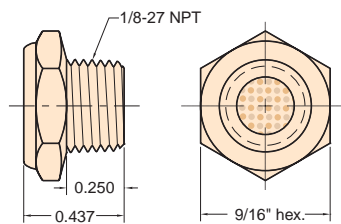
**Thread:** #10-32

**Gasket:** Buna-N furnished

**Use:** To muffle exhausts for quiet system operation

**15080**

**1/8" NPT Muffler**



**Material:** Solid brass body; sintered stainless steel insert (100 micron)

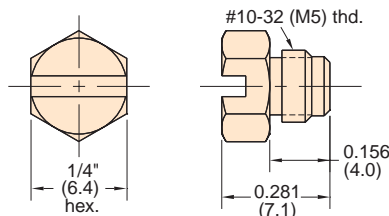
**Thread:** 1/8" NPT

**Use:** To muffle exhaust for quiet system operation

**Options:** (-NP)

**11755**

**#10-32 Screw Plug**



**Material:** Brass

**Thread:** #10-32 (M5)

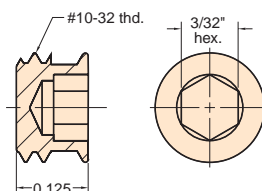
**Gasket:** Buna-N furnished package only

**Use:** For plugging unused ports in manifolds, air lines and other devices

**Options:** (-NP), (-M5)

**0035-2**

**#10-32 Headless Screw Plug**



**Material:** Stainless Steel screw plug

**Thread:** #10-32

**Use:** For plugging unused ports in manifold, air lines and other devices that require a flush surface plug; use 3/32 Allen hex wrench to install

**Note:** Thread sealant recommended